



PROVINCIA DI PESCARA
SETTORE I
Servizio edilizia Scolastica



INTERVENTI DI MIGLIORAMENTO SISMICO DELL'I.T.C.G. "G.
MARCONI" DI PENNE - PALAZZO DE STERLICH

- Ordinanza del Commissario di Governo per la ricostruzione n. 37/2017

STUDIO DI FATTIBILITA' TECNICA ED ECONOMICA

DOCUMENTAZIONE FOTOGRAFICA PROPRIETA' PRIVATE

IL TECNICO

IL COLLABORATORE TECNICO

IL R.U.P.

IL DIRIGENTE

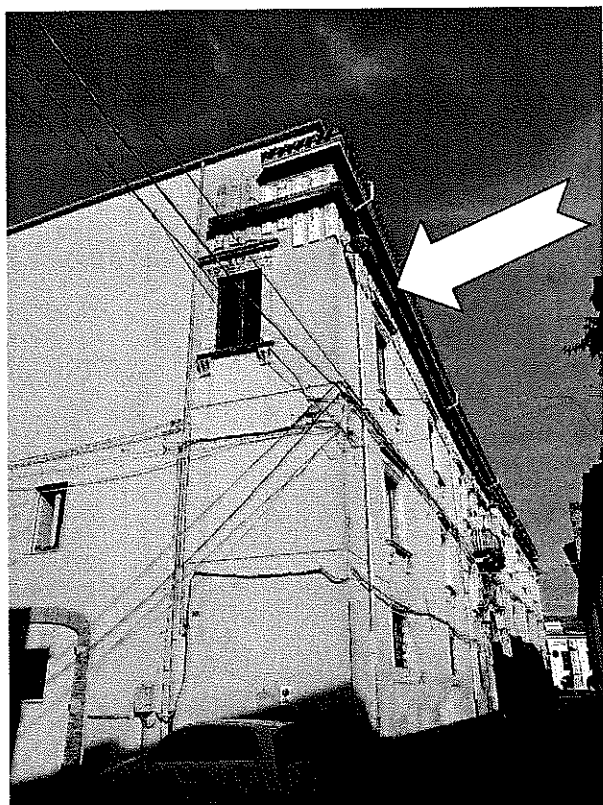
SCALA:

DATA:

28/05/2010



FACCIATA EDIFICIO



FACCIATA EDIFICIO

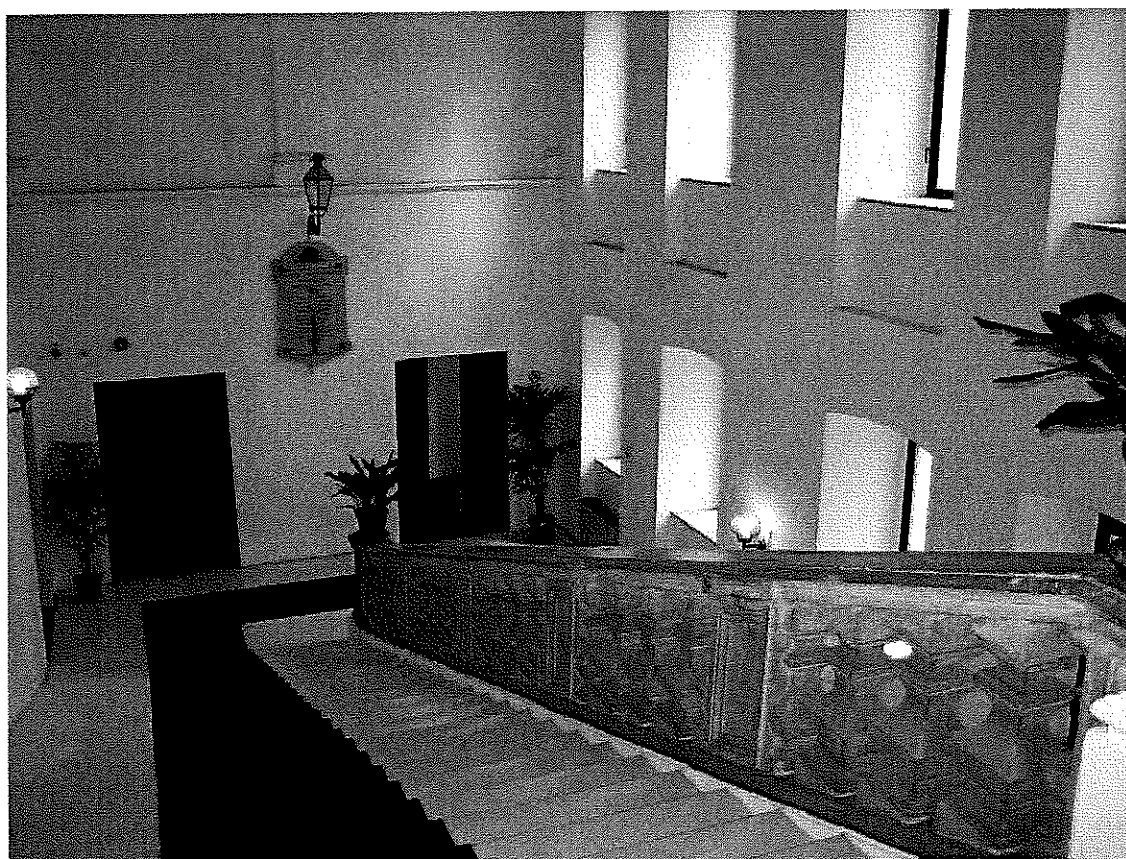
(da notare le opere di contenimento della facciata prospiciente Via Dei Martiri Pennesi)



FACCIATA EDIFICIO



FACCIATA INGRESSO PRORPIETA' BPM



INTERNO EDIFICIO

PROPRIETA' IANNASCOLI ANTONELLA

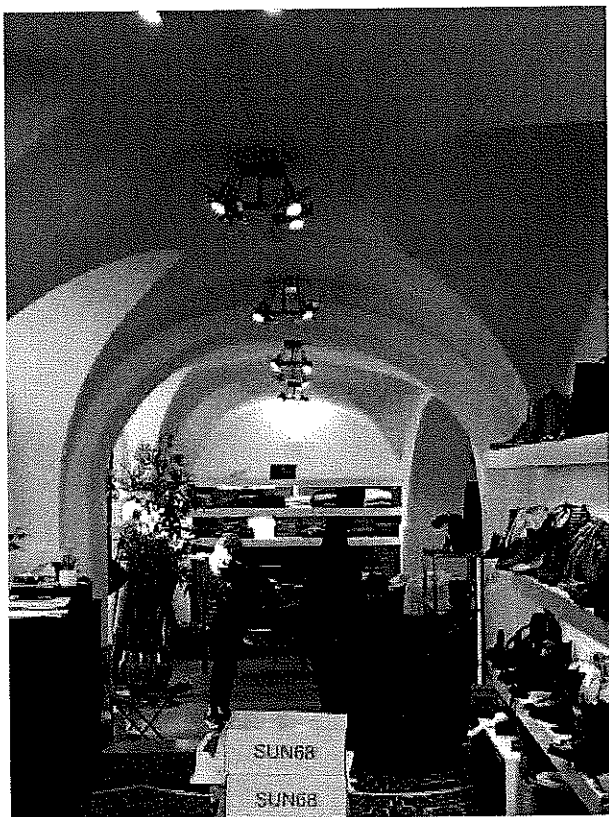


Foto 1

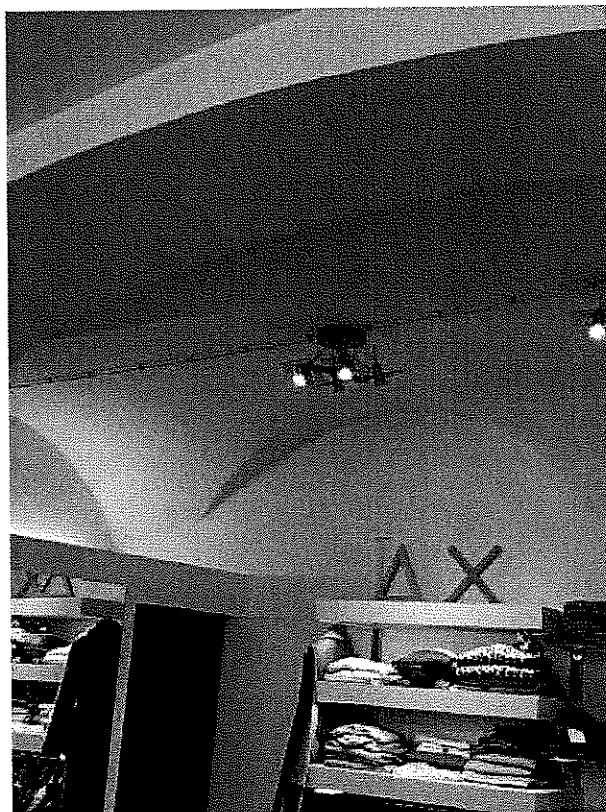


Foto 2

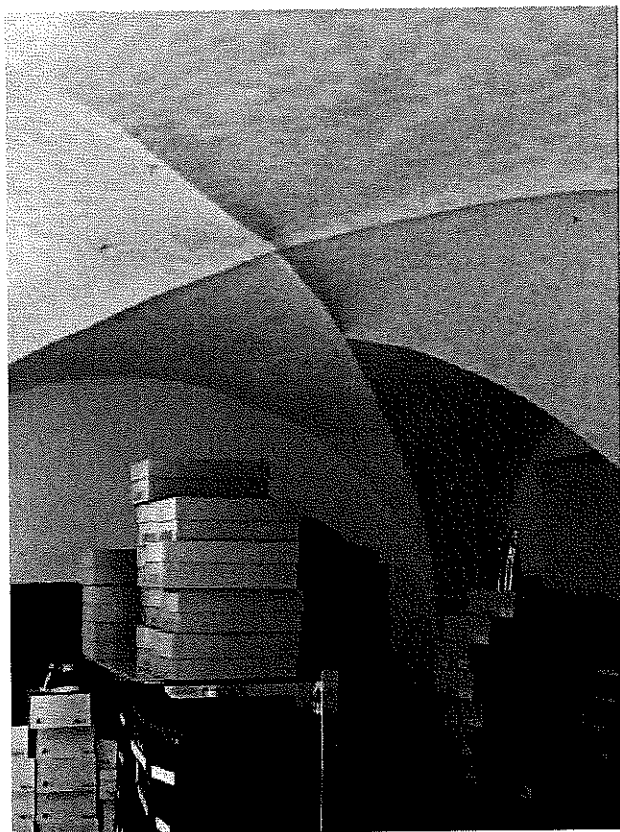


Foto 3

PROPRIETA' EREDI DI CARLO

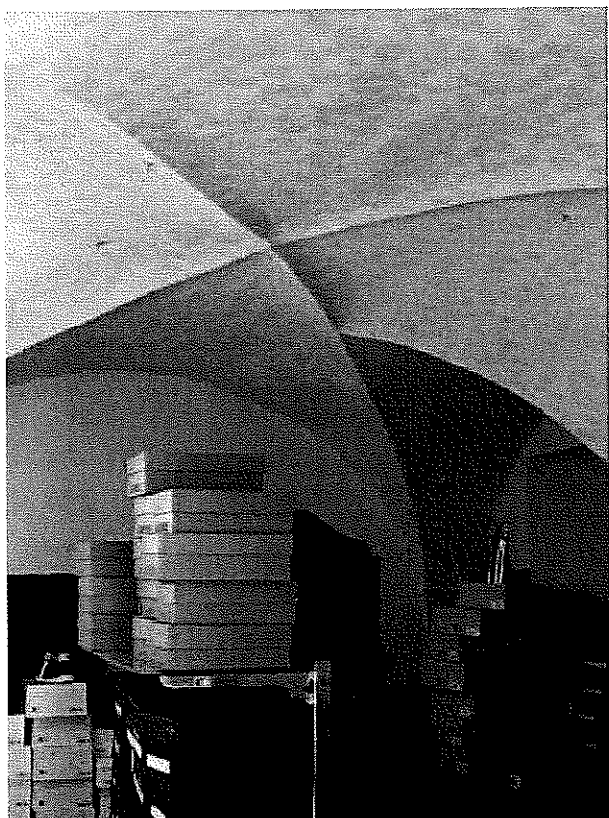


Foto 4



Foto 5

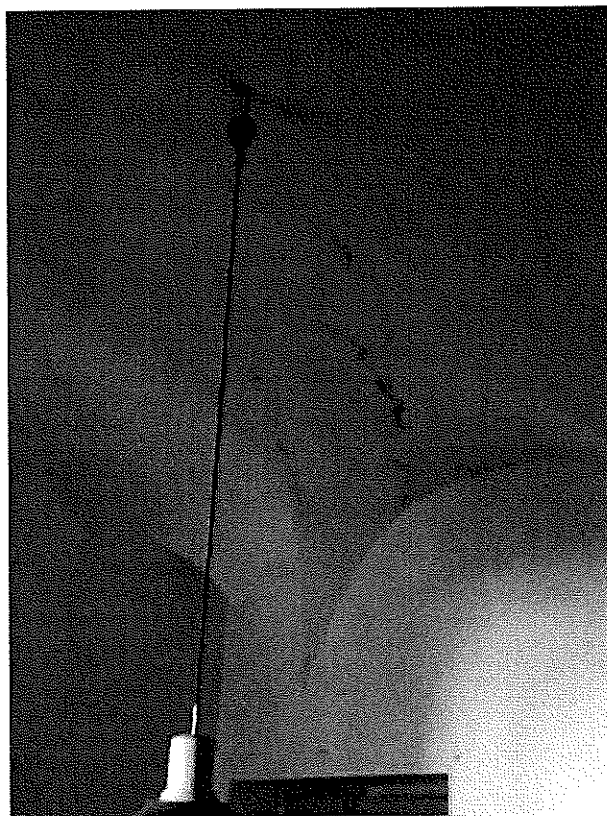


Foto 6

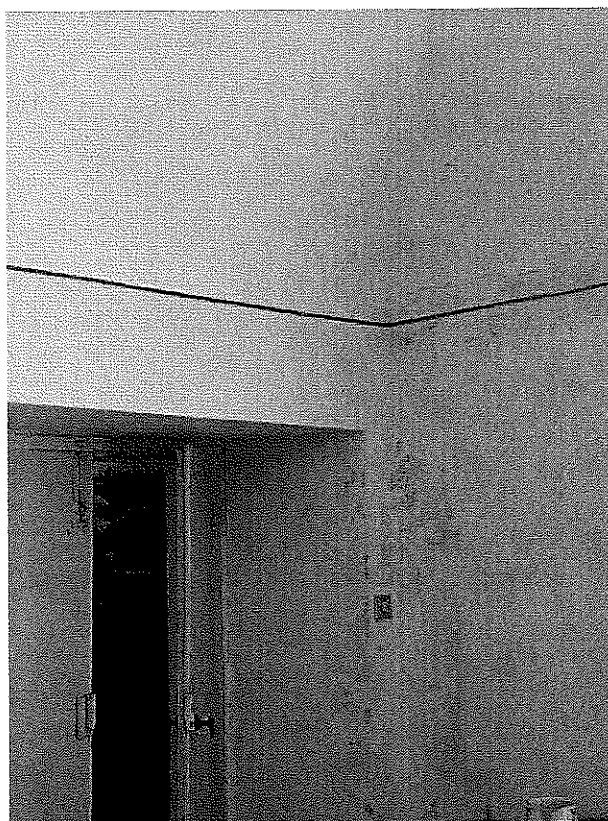


Foto 7

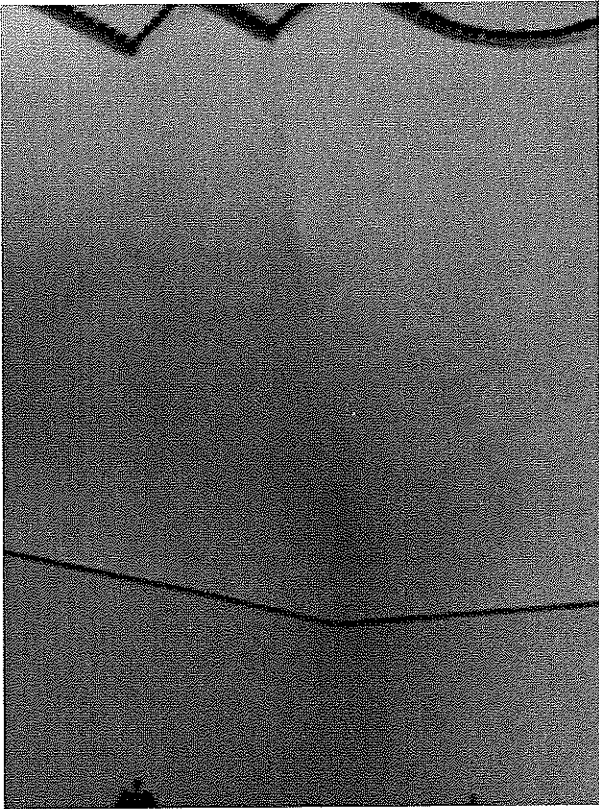


Foto 8

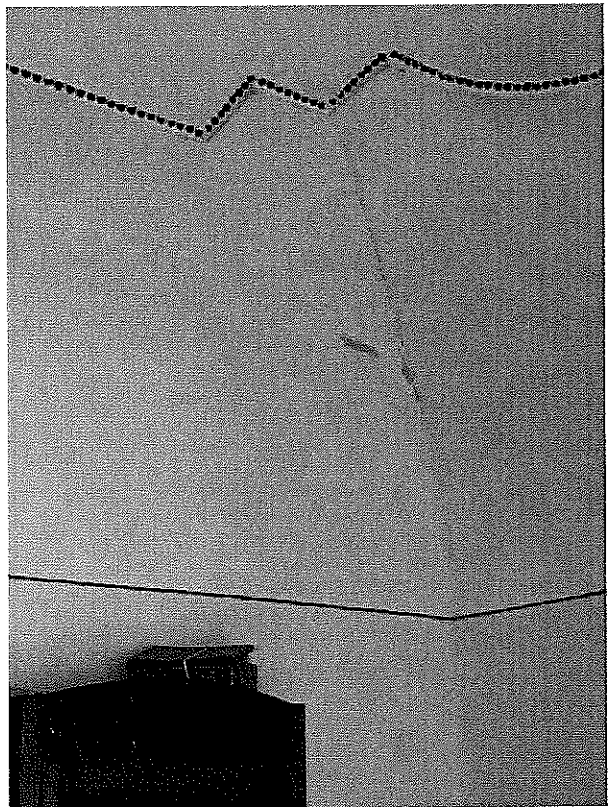


Foto 9



Foto 10

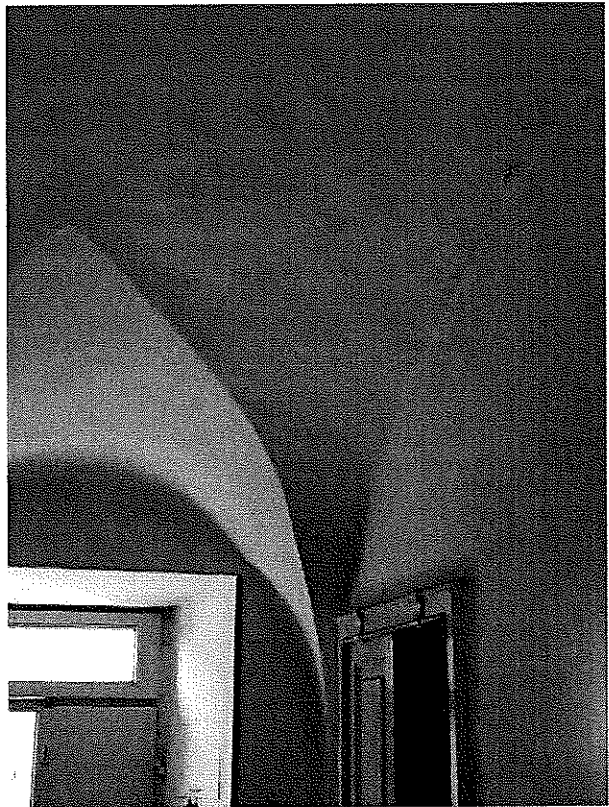


Foto 11

PROPRIETA' BPM (IN LEASING FERNANDO DI SIMONE)

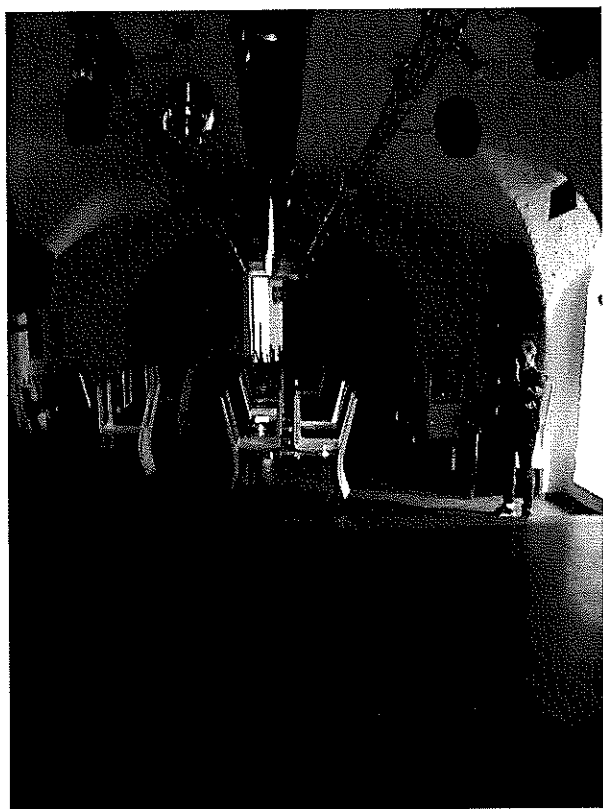


Foto 12



Foto 13



Foto 14



Foto 15